

EGGCRATE GRILLE

idealair

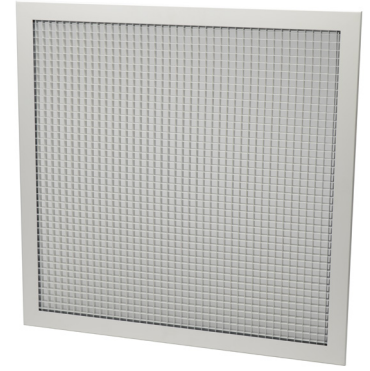
Quality air distribution products

» **Select** models available for next day delivery

EGGCRATE GRILLE

Product Overview

- Extract air diffuser
- Optional opposed blade damper
- Available in 9 standard sizes
- Eggcrate cell size 12.5mm x 12.5mm
- Available in colour RAL9010 (20% gloss)



Eggcrate extract grilles are suitable for duct and ceiling applications in most commercial projects. When fitted with an opposed blade damper at the rear, the damper is adjustable through the front face of the grille.

Construction

Frames are manufactured from 6063 T6 extruded aluminium. Frame mitres are mechanically jointed and tig welded on the rear and neck for added strength and rigidity, preventing any distortion of the hairline mitres. Eggcrate grille cores are constructed from aluminium eggcrate 12.5mm x 12.5mm.

Fixing

No fixing holes are provided (fixing by others).

Finish

PPC RAL9010 – 20% gloss white (standard).

Contents

Page	Information
3	Codes & Sizing
4	Selection Nomogram
5	Dimensional Data
6	Notes

EGGCRATE GRILLE

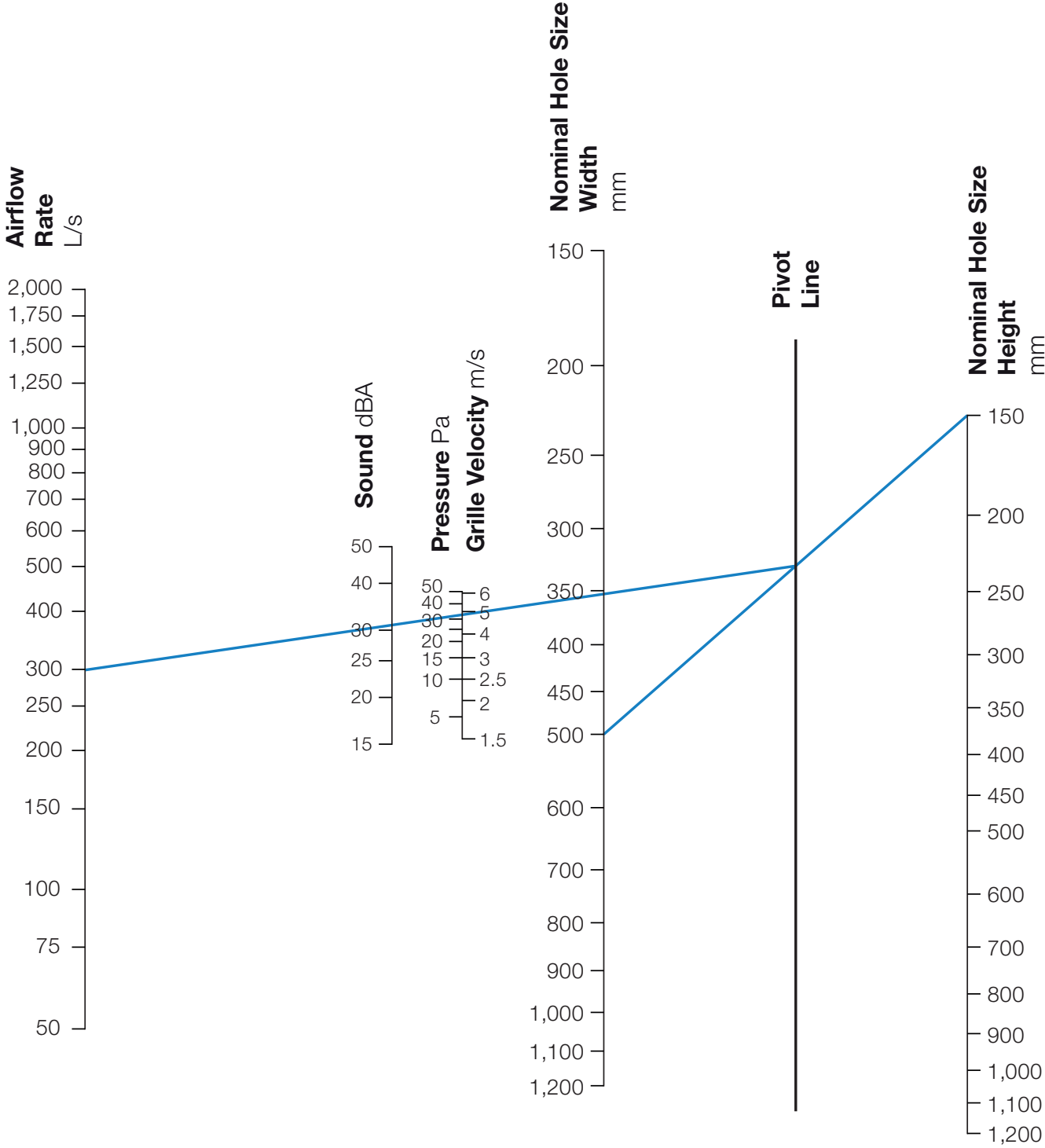
Codes & Sizing

Product Code	OBD	Nominal Hole Size mm x mm
FEG10150X0150NOM	No	150 x 150
FEG10200X0200NOM	No	200 x 200
FEG10250X0250NOM	No	250 x 250
FEG10300X0300NOM	No	300 x 300
FEG10350X0350NOM	No	350 x 350
FEG10400X0400NOM	No	400 x 400
FEG10450X0450NOM	No	450 x 450
FEG10500X0500NOM	No	500 x 500
FEG10595X0595AF*	No	*
FER10150X0150NOM	Yes	150 x 150
FER10200X0200NOM	Yes	200 x 200
FER10250X0250NOM	Yes	250 x 250
FER10300X0300NOM	Yes	300 x 300
FER10350X0350NOM	Yes	350 x 350
FER10400X0400NOM	Yes	400 x 400
FER10450X0450NOM	Yes	450 x 450
FER10500X0500NOM	Yes	500 x 500
FER10595X0595AF*	Yes	*

* Lay-in tile replacer. 595 x 595 overall across flange.

EGGCRATE GRILLE

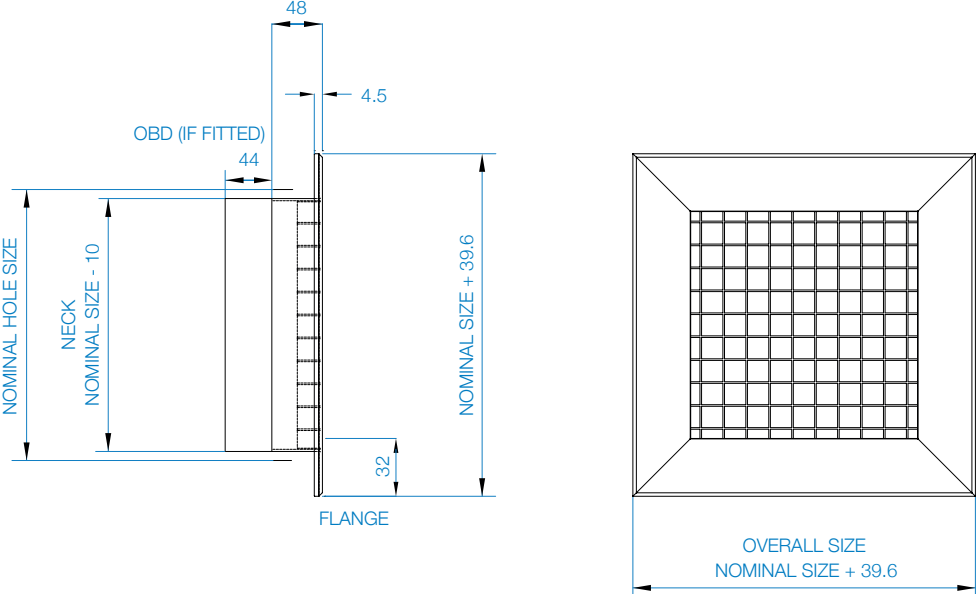
Selection Nomogram



All data based on: dBA figures based on room losses of 8 db for sound power reference 10-12W. For grilles with opposed blade dampers Pa + 50%.

EGGCRATE GRILLE

Dimensional Data



Dimensions are in mm.

Etta Fans Limited has a policy of continuous product development and improvement and therefore reserves the right to supply products which may differ from those illustrated and described in this publication. Confirmation of dimensions and data will be supplied on request.

Building Services

Tel **+44 (0) 1384 275800**
Fax **+44 (0) 1384 275810**
Email **info@eltafans.co.uk**

46 Third Avenue, Pensnett Trading Estate, Kingswinford,
West Midlands, DY6 7US United Kingdom

Applied Technology & Building Services Export

Tel **+44 (0) 1489 566500**
Fax **+44 (0) 1489 566555**
Email **at@eltafans.co.uk / export@eltafans.co.uk**

17 Barnes Wallis Road, Segensworth East Industrial Estate,
Fareham, Hampshire, PO15 5ST United Kingdom

eltafans.com

EG-03-2018 Issue A



BS EN ISO 9001:2015 FM 556465

