



SPIGOT SILENCER

SPIGOT SILENCER

Overview

- Small metric range of attenuators with spigot connection
- Ideal for small fans
- Ideal for cross talk elimination
- Ideal for flexible or spiral ducting



Construction

Both types are rigidly constructed in galvanised sheet steel, with a highly absorbent sound attenuating lining between the outer casing and the inner perforated steel lining. The end faces of the silencer do not have threaded holes for fixings, but has a steel spigot for ease of mounting.

Melinex lined silencers must be used to prevent grease impregnation into the acoustic media for kitchen extract applications as prescribed in DW/172 HVAC Specification For Kitchen Ventilation Systems. For Melinex insertion losses, please contact Elta Fans. Silencers can be provided with differing lengths: 300, 600, 900 and 1200mm.

Silencer Attenuation

To determine the sound level of a fan fitted with a silencer, the dynamic insertion loss should be subtracted from the sound power level spectrum (dBW) of the fan. This should be done for the entire octave band mid-frequency spectrum. The fan dBW ratings and silencer attenuation apply equally to in duct applications, with a silencer connected between the fan and the duct system.

Dynamic Insertion Loss

The silencer attenuation is defined as the “dynamic insertion loss”. The values quoted in the tables represent the difference between the sound power level of a fan and silencer combination (dBW) and that of the fan alone (dBW). The dynamic insertion losses shown are the attenuations recorded under ideal working conditions. The achieved attenuation will vary according to the air velocity and flow pattern in the airways. Noise regeneration can occur at higher velocities, especially in EP silencers.

Square / Rectangular Silencers

In highly noise sensitive areas, where the circular silencers cannot achieve the necessary attenuation levels, Elta Fans can design and build optional splitter silencers for greater effect.

SPIGOT SILENCER

Dynamic Insertion Loss

Spigot Ø100-500

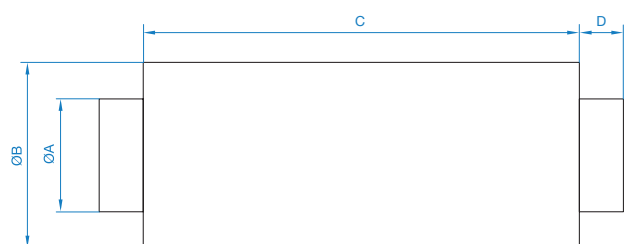
Product Code	Length	Insertion Loss @ Octave band (Hz)							
		63	125	250	500	1K	2K	4K	8K
068-0100-JF1	300mm	-3	-4	-9	-17	-23	-26	-25	-14
068-0100-JF2	600mm	-5	-8	-15	-33	-39	-40	-36	-20
068-0100-JF3	900mm	-10	-13	-21	-40	-45	-40	-36	-24
068-0100-JF4	1200mm	-12	-15	-23	-42	-47	-42	-38	-26
068-0125-JF1	300mm	-3	-3	-8	-16	-21	-24	-22	-12
068-0125-JF2	600mm	-4	-8	-13	-30	-35	-35	-31	-15
068-0125-JF3	900mm	-9	-12	-18	-37	-41	-38	-34	-20
068-0125-JF4	1200mm	-11	-15	-21	-40	-46	-41	-36	-23
068-0150-JF1	300mm	-3	-3	-6	-14	-19	-23	-22	-11
068-0150-JF2	600mm	-4	-7	-12	-23	-30	-36	-31	-15
068-0150-JF3	900mm	-8	-9	-15	-31	-37	-37	-34	-18
068-0150-JF4	1200mm	-10	-14	-17	-34	-41	-40	-36	-20
068-0160-JF1	300mm	-3	-3	-6	-14	-19	-23	-22	-11
068-0160-JF2	600mm	-4	-7	-12	-23	-29	-35	-30	-15
068-0160-JF3	900mm	-8	-9	-15	-31	-37	-37	-34	-18
068-0160-JF4	1200mm	-10	-14	-18	-33	-40	-39	-35	-18
068-0200-JF1	300mm	-2	-3	-6	-13	-17	-20	-18	-9
068-0200-JF2	600mm	-4	-6	-10	-20	-27	-32	-20	-11
068-0200-JF3	900mm	-7	-9	-14	-32	-39	-36	-26	-15
068-0200-JF4	1200mm	-10	-12	-17	-35	-41	-44	-28	-16
068-0250-JF1	300mm	-2	-3	-6	-12	-16	-19	-17	-8
068-0250-JF2	600mm	-3	-6	-10	-19	-25	-29	-18	-10
068-0250-JF3	900mm	-5	-8	-12	-24	-30	-30	-22	-14
068-0250-JF4	1200mm	-7	-10	-15	-31	-37	-38	-26	-15
068-0315-JF1	300mm	-1	-3	-6	-12	-15	-18	-16	-8
068-0315-JF2	600mm	-3	-5	-8	-16	-21	-22	-16	-14
068-0315-JF3	900mm	-4	-7	-10	-20	-31	-28	-17	-14
068-0315-JF4	1200mm	-6	-9	-14	-23	-32	-32	-18	-15
068-0355-JF1	300mm	-1	-3	-6	-12	-15	-18	-16	-8
068-0355-JF2	600mm	-3	-4	-7	-15	-19	-20	-15	-13
068-0355-JF3	900mm	-4	-7	-9	-19	-28	-25	-16	-13
068-0355-JF4	1200mm	-5	-8	-13	-22	-31	-29	-17	-14
068-0400-JF1	300mm	-1	-2	-4	-11	-15	-15	-12	-8
068-0400-JF2	600mm	-2	-4	-7	-14	-17	-18	-14	-11
068-0400-JF3	900mm	-3	-6	-9	-18	-26	-23	-15	-12
068-0400-JF4	1200mm	-5	-8	-13	-22	-30	-27	-17	-12
068-0500-JF1	300mm	-1	-1	-3	-10	-14	-14	-11	-7
068-0500-JF2	600mm	-2	-4	-6	-14	-16	-16	-13	-11
068-0500-JF3	900mm	-3	-6	-8	-17	-24	-21	-15	-11
068-0500-JF4	1200mm	-4	-8	-12	-19	-28	-23	-16	-12

For sizes 560-710, please contact Elta Fans.

SPIGOT SILENCER

Dimensional Data

Product Code	Fan Dia.	A	B	C	D	Weight kg
068-0100-JF1	100	98	204	300	40	2.5
068-0100-JF2	100	98	204	600	40	4.6
068-0100-JF3	100	98	204	900	40	6.7
068-0100-JF4	100	98	204	1200	40	8.7
068-0125-JF1	125	123	230	300	40	2.9
068-0125-JF2	125	123	230	600	40	5.4
068-0125-JF3	125	123	230	900	40	7.8
068-0125-JF4	125	123	230	900	40	10.2
068-0150-JF1	150	148	255	300	40	3.4
068-0150-JF2	150	148	255	600	40	6.1
068-0150-JF3	150	148	255	900	40	8.9
068-0150-JF4	150	148	255	1200	40	11.6
068-0160-JF1	160	158	265	300	40	3.5
068-0160-JF2	160	158	265	600	40	6.4
068-0160-JF3	160	158	265	900	40	9.3
068-0160-JF4	160	158	265	1200	40	12.2
068-0200-JF1	200	198	305	300	40	4.2
068-0200-JF2	200	198	305	600	40	7.6
068-0200-JF3	200	198	305	900	40	11.0
068-0200-JF4	200	198	305	1200	40	14.5
068-0250-JF1	250	248	355	300	40	5.0
068-0250-JF2	250	248	355	600	40	9.1
068-0250-JF3	250	248	355	900	40	13.2
068-0250-JF4	250	248	355	1200	40	17.3
068-0315-JF1	315	313	420	300	40	6.1
068-0315-JF2	315	313	420	600	40	11.1
068-0315-JF3	315	313	420	900	40	16.1
068-0315-JF4	315	313	420	1200	40	21.0
068-0355-JF1	355	353	460	300	40	6.8
068-0355-JF2	355	353	460	600	40	12.3
068-0355-JF3	355	353	460	900	40	17.8
068-0355-JF4	355	353	460	1200	40	23.3
068-0400-JF1	400	398	505	300	40	7.5
068-0400-JF2	400	398	505	600	40	13.6
068-0400-JF3	400	398	505	900	40	19.8
068-0400-JF4	400	398	505	1200	40	25.9
068-0500-JF1	500	498	654	300	40	13.2
068-0500-JF2	500	498	654	600	40	26.4
068-0500-JF3	500	498	654	900	40	39.6
068-0500-JF4	500	498	654	1200	40	52.8



For sizes 500-710, please contact Elta Fans.
Dimensions are in mm.

SPIGOT SILENCER

Notes

SPIGOT SILENCER

Notes

Building Services

Tel **+44 (0) 1384 275800**
Fax **+44 (0) 1384 275810**
Email **info@eltafans.co.uk**

46 Third Avenue, Pensnett Trading Estate, Kingswinford,
West Midlands, DY6 7US United Kingdom

Applied Technology & Building Services Export

Tel **+44 (0) 1489 566500**
Fax **+44 (0) 1489 566555**
Email **at@eltafans.co.uk / export@eltafans.co.uk**

17 Barnes Wallis Road, Segensworth East Industrial Estate,
Fareham, Hampshire, PO15 5ST United Kingdom

eltafans.com

068-JF-11-2018 Issue B



BS EN ISO 9001:2015 FM 556465

