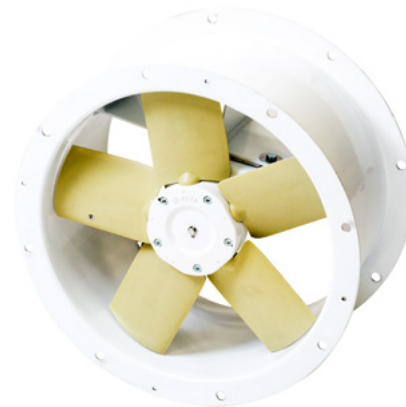




24V DC AXIAL FANS

24V DC AXIAL FANS

Overview



Axial fan with permanent magnet motor for marine applications, commonly used in engine rooms.

- Manufactured from mild steel and epoxy powder coated white
- Durable product, able to withstand vigorous and corrosive marine environments
- Motors are class F insulation and rated IP54
- Easy on-board installation thanks to the provided flying leads

| Model | EMS250 | EMS315 |
|------------------------|---------------------------|---------------------------|
| Motor details | 250W @ 3000RPM | 550W @ 3000RPM |
| Casing | Spun Mild Steel | Spun Mild Steel |
| Finish | White Powder Epoxy Coated | White Powder Epoxy Coated |
| Impeller | Aluminium GRP | Aluminium GRP |
| Motor | Permanent magnet | Compound Wound |
| Brushes | Easy access | Easy access |
| Rating | Continuous | Continuous |
| Electrical connections | Flying Lead | Flying Lead |
| Full load current | 10A @ 24V | 30A @ 24V |
| Motor insulation | Class F | Class F |
| RF suppression | Included | Included |

Replacement Products

606-24V-DC1

24V PM Motor for EMS250



515S-A4176

24V PM Motor Brushes for EMS250



606S-A1858

24V CW Motor for EMS315



Dimensions are in mm.

Applied Technology & Building Services Export

Tel **+44 (0) 1489 566500**

Fax **+44 (0) 1489 566555**

Email **at@eltafans.co.uk / export@eltafans.co.uk**

17 Barnes Wallis Road, Segensworth East Industrial Estate,
Fareham, Hampshire, PO15 5ST United Kingdom

eltafans.com

EMS-11-2020 Issue A



BS EN ISO 9001:2015 FM 556465

